

ATSMFG

Manufacturing Excellence Since 1996

Stone Mountain



Tabletop & Supplies Catalog

Effective March 1st, 2026
We Are On **AUTOQUOTES**

atsmfg.com

— About Us

Your trusted partner for high-quality furniture, equipment, and sourcing solutions across the foodservice industry. Since 1996, ATS MFG has built its reputation on American-made craftsmanship, durable construction, and stylish designs that stand up to the demands of everyday commercial use. As we continue to grow, we now offer a broader range of product lines and container-level wholesale options to support the evolving needs of our dealers and end users.

WHO WE ARE

At ATS MFG, we are more than a manufacturer. We are your solutions partner. From booth seating, chairs, barstools, and table tops to equipment, tableware, stainless-steel essentials, and faucets, we provide end-to-end sourcing that helps your business operate with confidence. Whether you need custom manufacturing or large-scale importing, our team combines technical expertise with responsive service to ensure you receive the right products at the right value.

OUR COMMITMENT TO YOU

With nearly three decades of industry experience, we understand the unique challenges of foodservice operations. ATS MFG is committed to delivering products that balance durability, style, and affordability, all backed by reliable lead times and transparent support. Our goal is simple: to make procurement easier, more efficient, and more cost-effective, so you can focus on running a successful business.

Contact Us

Have a question? csr@atsmfg.com

Place orders po@atsmfg.com

Shipping & freight quote freight@atsmfg.com

Make a payment AcctsRec@atsmfg.com

Phone: 770-270-1688

Fax: 770-270-5919

Toll Free: 800-358-0212

DOMINION

The Dominion pattern features an art deco design with two lines down the length of the handle.



0001-03



0001-08



0001-05



0001-10

- ♦ 18/0 stainless steel
- ♦ Medium weight
- ♦ Vibro finish

ITEM	DESCRIPTION	LENGTH	NET\$	LIST\$	CASE	WEIGHE
0001-03	Dinner Spoon	7"			50 Dozen	16.0 Lbs
0001-05	Dinner Fork	7-1/8"			50 Dozen	14.7 Lbs
0001-08	Dinner Knife	8"			25 Dozen	11.9 Lbs
0001-10	Tablespoon	7-5/8"			25 Dozen	14.0 Lbs

ELEGANCE

The Elegance pattern in vibro finish features embossed floral embellishments with a single motif at the handle tip.



0004-03



0004-04



0004-05



0004-08

- ♦ 18/0 stainless steel
- ♦ Heavy weight
- ♦ Vibro finish

ITEM	DESCRIPTION	LENGTH	NET\$	LIST\$	CASE	WEIGHE
0004-03	Dinner Spoon	7-1/4"			50 Dozen	21.3 Lbs
0004-04	Bouillon Spoon	6"			50 Dozen	14.7 Lbs
0004-05	Dinner Fork	7-1/4"			50 Dozen	19.7 Lbs
0004-08	Dinner Knife	8-5/8"			15 Dozen	12.7 Lbs

TOULOUSE

The Toulouse pattern features a fiddle shape handle with a stylish shell motif.



0006-05



0006-06



0006-08

- ♦ 18/0 stainless steel
- ♦ Extra heavy weight
- ♦ Mirror finish
- ♦ 3.0mm thickness dinner fork and spoon

ITEM	DESCRIPTION	LENGTH	NET\$	LIST\$	CASE	WEIGHE
0006-05	Dinner Fork	7-5/8"			25 Dozen	14.0 Lbs
0006-06	Salad Fork	7"			25 Dozen	25.9 Lbs
0006-08	Dinner Knife	8-3/4"			15 Dozen	26.0 Lbs



The Continental pattern is the moderately priced version of the Shangarila pattern with the same simple contour lines and features.

CONTINENTAL

- ♦ 18/0 stainless steel
- ♦ Extra heavy weight
- ♦ Mirror finish
- ♦ 3.0mm thickness dinner fork and spoon



0021-01



0021-03

ITEM	DESCRIPTION	LENGTH	NET\$	LIST\$	CASE	WEIGHE
0021-01	Teaspoon	6"			25 Dozen	10.6 Lbs
0021-03	Dinner Spoon	7-1/4"			25 Dozen	16.9 Lbs
0021-05	Dinner Fork	7-1/4"			25 Dozen	13.6 Lbs
0021-06	Salad Fork	6-3/4"			25 Dozen	11.1 Lbs



0021-05



0021-06

With simple and elegant contoured lines, the Shangarila pattern brings an understated sophistication to any setting.

SHANGARILA

- ♦ 18/0 stainless steel
- ♦ Extra heavy weight
- ♦ Mirror finish
- ♦ 3.0mm thickness dinner fork and spoon



0030-08

ITEM	DESCRIPTION	LENGTH	NET\$	LIST\$	CASE	WEIGHE
0030-08	Dinner-Kinfe	9-1/4"			15 Dozen	21.3 Lbs

PLASTIC HANDLE STEAK KNIVES

ITEM	DESCRIPTION	LENGTH	NET\$	LIST\$	CASE	WEIGHE
K-50P	Rounded Tip	5"			50 Dozen	21.0 Lbs



K-50P NSF

WOODEN HANDLE STEAK KNIVES

ITEM	DESCRIPTION	LENGTH	NET\$	LIST\$	CASE	WEIGHE
K-55W	Rounded Tip	4-1/2"			48 Dozen	15.1 Lbs



K-55W



Steam Table Pan

- 24 Guage, 18/8 Stainless Steel
- Anti-Jamming
- Must purchase full case QTY
- NSF Listed



SP194
1/9 Size 4"Depth



SP164
1/6 Size 4"Depth



SP144
1/4 Size 4"Depth



SP134
1/3 Size 4"Depth



SP124
1/2 Size 4"Depth



SP114
Full Size 4"Depth

Item #	Size	Depth	Price Net (EA)	PCS/Box	Weight (Box)
SP112	1/1	2"		12	26 lbs
SP114		4"		12	30 lbs
SP116		6"		12	36 lbs
SP122	1/2	2"		24	27 lbs
SP124		4"		24	30 lbs
SP126		6"		12	18 lbs
SP134	1/3	4"		24	25 lbs
SP136		6"		24	33 lbs
SP144	1/4	4"		48	37 lbs
SP146		6"		24	27 lbs
SP164	1/6	4"		48	26 lbs
SP166		6"		48	28 lbs
SP194	1/9	4"		72	32 lbs



Steam Table Pan Cover

- 24 Guage, 18/8 Stainless Steel
- Anti-Jamming
- Must purchase full case QTY
- NSF Listed



SP13C



SP12C



SP11C



SP13CO



SP12CO



SP11CO

Item #	Description	Price Net (EA)	PC/CS	Weight (Box)
SP11C	1/1 Steam Pan Cover, Solid, NSF, 24 Guage		24	33 lbs
SP11CO	1/1 Steam Pan Cover, Slotted, NSF, 24 Guage		24	33 lbs
SP12C	1/2 Steam Pan Cover, Solid, NSF, 24 Guage		48	31 lbs
SP12CO	1/2 Steam Pan Cover, Slotted, NSF, 24 Guage		48	31 lbs
SP13C	1/3 Steam Pan Cover, Solid, NSF, 24 Guage		72	30 lbs
SP13CO	1/3 Steam Pan Cover, Slotted, NSF, 24 Guage		72	30 lbs
SP14C	1/4 Steam Pan Cover, Solid, NSF, 24 Guage		72	22 lbs
SP14CO	1/4 Steam Pan Cover, Slotted, NSF, 24 Guage		72	22 lbs
SP16C	1/6 Steam Pan Cover, Solid, NSF, 24 Guage		72	18 lbs
SP16CO	1/6 Steam Pan Cover, Slotted, NSF, 24 Guage		72	18 lbs
SP19C	1/9 Steam Pan Cover, Solid, NSF, 24 Guage		72	14 lbs
SP19CO	1/9 Steam Pan Cover, Slotted, NSF, 24 Guage		72	14 lbs



Colored Platters



COB-1352



CMR-1352



CSF-1352

- Oval platter
- Microwave & dishwasher safe
- Oven safe
- Ceramic

Item #	Size	Case Qty	Color	Weight	Price
COB-0975	9-3/4" x 7"	1 DZ / Case	Ocean Blue	22 lbs	
COB-1150	11-1/2" x 8-3/4"	1 DZ / Case		29 lbs	
COB-1350	13-1/2" x 9-3/4"	6 EA / Case		22 lbs	
CMR-0975	9-3/4" x 7"	1 DZ / Case	Maroon	22 lbs	
CMR-1150	11-1/2" x 8-3/4"	1 DZ / Case		29 lbs	
CMR-1350	13-1/2" x 9-3/4"	6 EA / Case		22 lbs	
CSF-0975	9-3/4" x 7"	1 DZ / Case	Sunflower	22 lbs	
CSF-1150	11-1/2" x 8-3/4"	1 DZ / Case		29 lbs	
CSF-1350	13-1/2" x 9-3/4"	6 EA / Case		22 lbs	



Chinaware

All Model Microwave&Dishwasher Safe,Lead Free

- Color matched with industry competitors
- Slightly heavier for added durability
- Sleek design with round edges
- Compact packaging to reduce breakage

Maroon



CMR-0975

OVAL COUPE

ITEM	SIZE	NET\$	CASE	WEIGHT
CMR-0975	9-3/4" Dia x 7"		12 Pcs	19.8 Lbs
CMR-1150	11-1/2" x 8-3/4"		12 Pcs	28.6 Lbs
CMR-1350	13-1/2" x 9-3/4"		6 Pcs	19.8 Lbs

Ocean Blue



COB-0975

OVAL COUPE

ITEM	SIZE	NET\$	CASE	WEIGHT
COB-0975	9-3/4" x 7"		12 Pcs	19.8 Lbs
COB-1150	11-1/2" x 8-3/4"		12 Pcs	28.6 Lbs
COB-1350	13-1/2" x 9-3/4"		6 Pcs	19.8 Lbs

sunflower

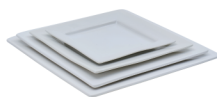


CSF-0975

OVAL COUPE

ITEM	SIZE	NET\$	CASE	WEIGHT
CSF-0975	9-3/4" x 7"		12 Pcs	19.8 Lbs
CSF-1150	11-1/2" x 8-3/4"		12 Pcs	28.6 Lbs
CSF-1350	13-1/2" x 9-3/4"		6 Pcs	19.8 Lbs

Pure White

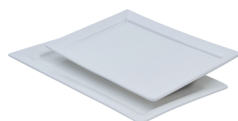


KES-0707

SQUARE DINNER PLATTER

ITEM	SIZE	NET\$	CASE	WEIGHT
KES-0707	7-1/4" x 7-1/4"		12 Pcs	14.3 Lbs
KES-0808	9-1/4" x 9-1/4"		12 Pcs	22.0 Lbs
KES-1010	10-1/2" x 10-1/2"		12 Pcs	36.3 Lbs
KES-1212	12" x 12"		6 Pcs	24.2 Lbs

Pure White



KES-0812

RECTANGULAR PLATTER

ITEM	SIZE	NET\$	CASE	WEIGHT
KES-0812	8" x 12"		12 Pcs	28.6 Lbs
KES-0814	7-7/8" x 14-1/2"		12 Pcs	35.2 Lbs



- Color matched with industry competitors
- Slightly heavier for added durability
- Sleek design with round edges
- Compact packaging to reduce breakage

OVAL WELSH RAREBIT DISH

American White

ITEM	SIZE	CAPACITY	NET\$	CASE	WEIGHT
COA-6-W	6-3/4" x 3-3/5" x 1-1/4"	4 Oz		36 Pcs	26.4 Lbs
COA-8-W	8-1/4" x 4" x 1-1/4"	8 Oz		24 Pcs	24.2 Lbs
COA-12-W	10" x 5-1/2" x 1-1/2"	12 Oz		24 Pcs	28.6 Lbs
COA-15-W	10-3/4" x 5-3/4" x 1-1/2"	15 Oz		24 Pcs	35.2 Lbs



COA-6-W

OVAL PLATTER WITH NARROW RIM

American White

ITEM	SIZE	NET\$	CASE	WEIGHT
NRC-12	9-3/4" x 7-1/2" x 1"		12 Pcs	22.0 Lbs
NRC-13	11-3/4" x 9-1/4" x 1-1/4"		12 Pcs	33.0 Lbs
NRC-14	13-1/4" x 10-3/5" x 1-1/4"		12 Pcs	44.0 Lbs



NRC-12

OVAL PLATTER WITH ROLLED EDGE

American White

ITEM	SIZE	NET\$	CASE	WEIGHT
REC-12	10-1/2" x 7" x 1-1/10"		12 Pcs	22.0 Lbs
REC-13	11-3/4" x 8-1/4" x 1-1/6"		12 Pcs	26.4 Lbs
REC-14	12-1/2" x 9" x 1-5/8"		12 Pcs	35.2 Lbs
REC-33	7" x 4-5/8" x 1/2"		24 Pcs	15.4 Lbs
REC-34	9-1/2" x 6-1/4" x 1-1/5"		24 Pcs	33.0 Lbs
REC-39	8-1/8" x 5-3/4" x 3/4"		24 Pcs	18.7 Lbs



REC-12

REC-33



ROUND PLATE WITH ROLLED EDGE

American White

ITEM	SIZE	NET\$	CASE	WEIGHT
REC-5	5-1/2" Dia x 1/2"H		36 Pcs	22.0 Lbs
REC-6	6-1/2" Dia x 1/2"H		36 Pcs	27.5 Lbs
REC-7	7-1/8" Dia x 3/4"H		36 Pcs	33.0 Lbs
REC-8	9" Dia x 1"H		24 Pcs	35.2 Lbs
REC-9	9-3/4" Dia x 1"H		24 Pcs	44.0 Lbs
REC-16	10-1/4" Dia x 1"H		24 Pcs	44.0 Lbs
REC-21	12" Dia x 1-1/4"H		12 Pcs	37.4 Lbs



REC-5



Chinaware

All Model Microwave&Dishwasher Safe,Lead Free

- Color matched with industry competitors
- Slightly heavier for added durability
- Sleek design with round edges
- Compact packaging to reduce breakage

American White



REC-15



REC-24

NAPPIE

ITEM	SIZE	CAPACITY	NET\$	CASE	WEIGHT
REC-15	5-5/8" Dia x 2"H	12.5 Oz		24 Pcs	22.0 Lbs
REC-24	5-1/4" Dia x 1-3/4"H	10 Oz		36 Pcs	23.1 Lbs

American White



REC-11



REC-32

FRUIT DISH

ITEM	SIZE	CAPACITY	NET\$	CASE	WEIGHT
REC-11	4-3/4" Dia x 1"H	5 Oz		36 Pcs	16.5 Lbs
REC-32	4-1/2" Dia x 1"H	3-1/2 Oz		36 Pcs	12.1 Lbs

American White



REC-2



REC-57

SAUCER

ITEM	SIZE	NET\$	CASE	WEIGHT
REC-2	6" Dia x 1"H		36 Pcs	22.0 Lbs
REC-57	6-7/8" Dia x 1"H		36 Pcs	28.6 Lbs

American White



REC-80



REC-81



REC-82

PASTA SALAD BOWL

ITEM	SIZE	CAPACITY	NET\$	CASE	WEIGHT
REC-80	7-1/4" Dia x 2-1/2"H	25 Oz		12 Pcs	26.4 Lbs
REC-81	8-1/4" Dia x 3"H	48 Oz		12 Pcs	19.8 Lbs
REC-82	9-1/4" x 3-1/4"H	60 Oz		12 Pcs	39.6 Lbs

American White



REC-115

PASTA BOWL

ITEM	SIZE	CAPACITY	NET\$	CASE	WEIGHT
REC-115	12" Dia x 2"H	24 Oz		12 Pcs	33.0 Lbs



- Color matched with industry competitors
- Slightly heavier for added durability
- Sleek design with round edges
- Compact packaging to reduce breakage

RIM SOUP PLATE

ITEM	SIZE	CAPACITY	NET\$	CASE	WEIGHT
REC-3	9" Dia x 2"H	10 Oz		36 Pcs	46.2 Lbs

American White

REC-3

JUNG BOWL

ITEM	SIZE	CAPACITY	NET\$	CASE	WEIGHT
JB-95	4-3/8" Dia x 2-1/4"H	9.5 Oz		24 Pcs	15.4 Lbs

American White

JB-95

GRAPEFRUIT BOWL

ITEM	SIZE	CAPACITY	NET\$	CASE	WEIGHT
REC-10	6-3/8" Dia x 2"H	13 Oz		24 Pcs	22.0 Lbs

American White

REC-10

BOUILLON CUP

ITEM	SIZE	CAPACITY	NET\$	CASE	WEIGHT
REC-4	4" Dia x 2-1/2"H	7-1/4 Oz		24 Pcs	13.2 Lbs

American White

REC-4

TIERRA MUG

ITEM	SIZE	CAPACITY	NET\$	CASE	WEIGHT
TM-8-W	3" Dia x 3-3/4"H	8 Oz		24 Pcs	19.8 Lbs

American White

TM-8-W



NSF BPA free

CLASSIC MELAMINE

Heat resistant up to 212°F (100°C) · Dishwasher safe
Not safe for oven or microwave



MPR-5T

MPR-5W

NSF BPA free

ROUND PLATES:MPR-SERIES

ITEM	SIZE	COLOR	NET\$	LIST\$	CASE	WEIGHT
MPR-5T	5-1/2" Dia	Tan			4 Dozen	14.1 Lbs
MPR-5W	5-1/2" Dia	White			4 Dozen	14.1 Lbs
MPR-6T	6-3/8" Dia	Tan			4 Dozen	16.5 Lbs
MPR-6W	6-3/8" Dia	White			4 Dozen	16.5 Lbs
MPR-7T	7-1/4" Dia	Tan			4 Dozen	21.3 Lbs
MPR-7W	7-1/4" Dia	White			4 Dozen	21.3 Lbs
MPR-8T	7-7/8" Dia	Tan			4 Dozen	20.9 Lbs
MPR-8W	7-7/8" Dia	White			4 Dozen	20.9 Lbs
MPR-9T	9" Dia	Tan			2 Dozen	15.3 Lbs
MPR-9W	9" Dia	White			2 Dozen	15.3 Lbs
MPR-10T	10" Dia	Tan			2 Dozen	17.6 Lbs
MPR-10W	10" Dia	White			2 Dozen	17.6 Lbs



MPO-96T

MPO-96W

NSF BPA free

OVAL PLATTERS WITH NARROW RIM:MPO-SERIES

ITEM	SIZE	COLOR	NET\$	LIST\$	CASE	WEIGHT
MPO-96T	9-3/4" X 6-3/4"	Tan			2 Dozen	12.1 Lbs
MPO-96W	9-3/4" X 6-3/4"	White			2 Dozen	12.1 Lbs
MPO-118T	11-1/2" X 8"	Tan			2 Dozen	15.1 Lbs
MPO-118W	11-1/2" X 8"	White			2 Dozen	15.1 Lbs
MPO-138T	13" X 8-1/2"	Tan			4 Dozen	33.1 Lbs
MPO-138W	13" X 8-1/2"	White			4 Dozen	33.1 Lbs
MPO-139T	13-1/8" X 9-1/2"	Tan			1 Dozen	14.0 Lbs
MPO-139W	13-1/8" X 9-1/2"	White			1 Dozen	14.0 Lbs
MPO-1510T	15-1/2" X 10-7/8"	Tan			2 Dozen	29.7 Lbs
MPO-1510W	15-1/2" X 10-7/8"	White			2 Dozen	29.7 Lbs



MB-22T

MB-22W

NSF BPA free

RIMLESS BOWLS:MB-SERIES

ITEM	SIZE	CAPACITY	COLOR	NET\$	LIST\$	CASE	WEIGHT
MB-22T	6-7/8" Dia	22 Oz	Tan			2 Dozen	12.0 Lbs
MB-22W	6-7/8" Dia	22 Oz	White			2 Dozen	12.0 Lbs
MB-32T	7-3/8" Dia	32 Oz	Tan			2 Dozen	13.1 Lbs
MB-32W	7-3/8" Dia	32 Oz	White			2 Dozen	13.1 Lbs
MB-41T	8" Dia	41 Oz	Tan			1 Dozen	9.4 Lbs
MB-41W	8" Dia	41 Oz	White			1 Dozen	9.4 Lbs
MB-52T	8-1/2" Dia	52 Oz	Tan			1 Dozen	11.4 Lbs
MB-52W	8-1/2" Dia	52 Oz	White			1 Dozen	11.4 Lbs



MN-11T

MN-11W

NSF BPA free

NAPPIES:MN-SERIES

ITEM	SIZE	CAPACITY	COLOR	NET\$	LIST\$	CASE	WEIGHT
MN-11T	4-3/4" Dia	11 Oz	Tan			4 Dozen	11.7 Lbs
MN-11W	4-3/4" Dia	11 Oz	White			4 Dozen	11.7 Lbs
MN-15T	5-1/8" Dia	15 Oz	Tan			4 Dozen	14.2 Lbs
MN-15W	5-1/8" Dia	15 Oz	White			4 Dozen	14.2 Lbs



MSB-12T

MSB-12W

NSF BPA free

SOUP/CEREAL BOWLS:MSB-SERIES

ITEM	SIZE	CAPACITY	COLOR	NET\$	LIST\$	CASE	WEIGHT
MSB-12T	6-3/8" Dia	12 Oz	Tan			4 Dozen	13.8 Lbs
MSB-12W	6-3/8" Dia	12 Oz	White			4 Dozen	13.8 Lbs



MSC-4T

MSC-4W

NSF BPA free

SAUCE CUPS/RAMEKINS:MPR-SERIES

ITEM	SIZE	CAPACITY	COLOR	NET\$	LIST\$	CASE	WEIGHT
MSC-4T	3-1/4" Dia	4 Oz	Tan			6 Dozen	11.7 Lbs
MSC-4W	3-1/4" Dia	4 Oz	White			6 Dozen	11.7 Lbs



MFB-4T

MFB-4W

NSF BPA free

FRUIT BOWLS:MFB-SERIES

ITEM	SIZE	CAPACITY	COLOR	NET\$	LIST\$	CASE	WEIGHT
MFB-4T	4-5/8" Dia	4 Oz	Tan			4 Dozen	10.1 Lbs
MFB-4W	4-5/8" Dia	4 Oz	White			4 Dozen	10.1 Lbs
MFB-5T	4-3/4" Dia	5 Oz	Tan			4 Dozen	11.1 Lbs
MFB-5W	4-3/4" Dia	5 Oz	White			4 Dozen	11.1 Lbs

BPA free NSF

MELAMINE COLLECTION



BOUILLON CUPS: MBC-SERIES

ITEM	SIZE	CAPACITY	COLOR	NET\$	LIST\$	CASE	WEIGHT
MBC-8T	3-7/8" Dia	8 Oz	Tan	36.69		4 Dozen	11.4 Lbs
MBC-8W	3-7/8" Dia	8 Oz	White	36.69		4 Dozen	11.4 Lbs



MBC-8T



MBC-8W



GRAPEFRUIT BOWLS: MGB-SERIES

ITEM	SIZE	CAPACITY	COLOR	NET\$	LIST\$	CASE	WEIGHT
MGB-10T	5-1/2" Dia	10 Oz	Tan	50.87		4 Dozen	12.4 Lbs
MGB-10W	5-1/2" Dia	10 Oz	White	50.87		4 Dozen	12.4 Lbs
MGB-13T	5-5/8" Dia	13 Oz	Tan	51.69		4 Dozen	14.0 Lbs
MGB-13W	5-5/8" Dia	13 Oz	White	51.69		4 Dozen	14.0 Lbs



MGB-10T



MGB-10W



RAMEKIN CUPS: MSR-SERIES

ITEM	SIZE	DESCRIPTION	CAPACITY	COLOR	NET\$	LIST\$	CASE	WEIGHT
MSR-1B	6-7/8" Dia	Plain	1-1/2 Oz	Bone			6 Dozen	8.5 Lbs
MSR-1K	6-7/8" Dia	Plain	1-1/2 Oz	Black			6 Dozen	8.5 Lbs
MSR-2B	7-3/8" Dia	Plain	2 Oz	Bone			6 Dozen	11.1 Lbs
MSR-2K	7-3/8" Dia	Plain	2 Oz	Black			6 Dozen	11.1 Lbs
MSR-3B	8" Dia	Plain	3 Oz	Bone			6 Dozen	12.8 Lbs
MSR-4B	8" Dia	Plain	4 Oz	Black			6 Dozen	14.4 Lbs
MSR-6B	8-1/2" Dia	Plain	6 Oz	Bone			6 Dozen	16.8 Lbs



MSR-1B



MSR-1K



DINNER PLATES: MPR-SERIES

ITEM	SIZE	COLOR	NET\$	LIST\$	CASE	WEIGHT
MPR-6B	6-1/4" Dia	Beige			4 Dozen	17.3 Lbs
MPR-7B	7-1/4" Dia	Beige			4 Dozen	19.2 Lbs
MPR-9B	9" Dia	Beige			2 Dozen	15.4 Lbs
MPR-10B	10" Dia	Beige			4 Dozen	35.9 Lbs



MPR-10B



SALAD BOWL: MSB-SERIES

ITEM	SIZE	CAPACITY	COLOR	NET\$	LIST\$	CASE	WEIGHT
MSB-10B	6-1/4" Dia. X 1-1/4"H	10 Oz	Beige			4 Dozen	20.2 Lbs



MSB-10B



MILESTONE BOUILLON CUPS: MBC-SERIES

ITEM	SIZE	CAPACITY	COLOR	NET\$	LIST\$	CASE	WEIGHT
MBC-8BL	4-1/4" Dia. X 2-1/4"H	8 Oz	Blue			4 Dozen	15.8 Lbs
MBC-8GR	4-1/4" Dia. X 2-1/4"H	8 Oz	Green			4 Dozen	15.8 Lbs
MBC-8RD	4-1/4" Dia. X 2-1/4"H	8 Oz	Orange Red			4 Dozen	15.8 Lbs
MBC-8YL	4-1/4" Dia. X 2-1/4"H	8 Oz	Yellow			4 Dozen	15.8 Lbs



MBC-8BL



MBC-8GR



MBC-8YL



MBC-8RD



MILESTONE SALAD BOWLS: MSB-SERIES

ITEM	SIZE	CAPACITY	COLOR	NET\$	LIST\$	CASE	WEIGHT
MSB-4BL	4-3/4" Dia	4-1/2 Oz	Blue			4 Dozen	14.1 Lbs
MSB-4GR	4-3/4" Dia	4-1/2 Oz	Green			4 Dozen	14.1 Lbs
MSB-4RD	5-1/8" Dia	4-1/2 Oz	Orange Red			4 Dozen	14.1 Lbs
MSB-4YL	5-1/8" Dia	4-1/2 Oz	Yellow			4 Dozen	14.1 Lbs



MSB-4GR



MSB-4BL



MSB-4YL



MSB-4RD



OVAL MILESTONE PLATTERS: MPO-SERIES

ITEM	SIZE	COLOR	NET\$	LIST\$	CASE	WEIGHT
MPO-97BL	9-1/2"L X 7-1/4"W	Blue			4 Dozen	29.8 Lbs
MPO-97GR	9-1/2"L X 7-1/4"W	Green			4 Dozen	29.8 Lbs
MPO-97RD	9-1/2"L X 7-1/4"W	Orange Red			4 Dozen	29.8 Lbs
MPO-97YL	9-1/2"L X 7-1/4"W	Yellow			4 Dozen	29.8 Lbs
MPO-129BL	12" L X 9" W	Blue			2 Dozen	24.2 Lbs
MPO-129GR	12" L X 9" W	Green			2 Dozen	24.2 Lbs
MPO-129RD	12" L X 9" W	Orange Red			2 Dozen	24.2 Lbs
MPO-129YL	12" L X 9" W	Yellow			2 Dozen	24.2 Lbs
MPO-1310BL	13-1/2"L X 10-1/2"W	Blue			4 Dozen	55.4 Lbs
MPO-1310GR	13-1/2"L X 10-1/2"W	Green			4 Dozen	55.4 Lbs
MPO-1310RD	13-1/2"L X 10-1/2"W	Orange Red			4 Dozen	55.4 Lbs
MPO-1310YL	13-1/2"L X 10-1/2"W	Yellow			4 Dozen	55.4 Lbs



MPO-97GR



MPO-97BL



MPO-97RD



MPO-97GR



ATS MFG Wood Underliners

Compatible with Industry Leading Skillets

	Model #	Size	Skillets	PCS/Case	NET / Case	lbs/Case
	UR5	6.25" R	 HMSB	24		11.9
	UR8	8" R	 HMSRD, L3SK3, H3SK	24		18.18
	UR9	11" R	 HMSRD	12		14.99
	UR16	8-1/2" R	 L5RPL3	24		18.50
	UOS6	7-3/4" L x 5-1/2" W	 HMsov	24		12.35
	UOS7	8-3/4" L x 6-1/2" W	 HM16OS	24		15.65
	UOS9	10-1/2" L x 7-3/4" W	 HOSD	12		11.02
	UO10	11-3/4" L x 9-1/4" W	 LOSH3	12		14.33
	UOH10	11-3/4" L x 9-1/4" W	 LOSH3, LOS3	12		14.33
	UOJ13	15-1/2" L x 11-1/2" W	 LJOSH3	12		20.94
	UMSRC	7-9/16" L x 6" W	 HMSRC / HMS14RC	24		15.21
	UREC12	13-3/4" L x 9-3/4" W	 LSCP3	12		24.25

- Not recommended for high temp dish washer
- 3/4" birch plywood & walnut stained

- Due to the nature of wood, color finish may vary compare to the image shown

ATS MFG Policies & Terms

This section provides a high-level overview of ATS MFG's terms, ordering process, shipping practices, and warranty coverage. It is designed to help dealers and partners understand how we work together.

For complete and most current policies, please visit www.atsmfg.com or contact our Customer Service team.

Terms & Conditions

All sales are subject to ATS MFG's Terms & Conditions.

By submitting a purchase order to ATS MFG, the customer agrees to comply with and be bound by these terms.

ATS MFG's written Order Acknowledgement, generated from the customer's purchase order, constitutes the governing agreement for production, shipment, and invoicing. Customers are responsible for reviewing all ATS communications carefully.

Ordering & Handling

Ordering Process: All purchase orders must be submitted in writing. Orders enter production once:

- Credit terms are approved
- Pricing and freight are confirmed
- All product specifications are complete

ATS MFG will issue a written Order Acknowledgement confirming product details, quantities, pricing, freight terms, and requested ship or pick-up dates. Customers must review the Order Acknowledgement promptly and report any discrepancies within 24 hours of receipt.

Pricing, Quotes & Payment Terms: All pricing is quoted in U.S. dollars and is subject to change without notice. Product and freight quotes are typically valid for 15 days, unless otherwise stated. Lead times are estimates based on current production schedules and material availability and may change if conditions evolve.

New accounts may require deposits or prepayment. Credit terms are available to approved accounts. Accounts with past-due balances may be placed on credit hold, which may delay production or shipment.

Order Changes & Cancellations: All order changes and cancellations must be submitted in writing and are subject to ATS approval. Approved changes may result in additional costs, including materials, labor, or restocking fees. Orders already in production or completed may not be eligible for cancellation.

Shipping & Freight

Shipping Methods & Routing: ATS MFG ships within the continental United States. Shipping is arranged according to instructions provided on the purchase order:

- Customer's third-party carrier
- ATS-arranged freight (freight quote provided for approval)
- Freight charges & delivery requirements must be confirmed prior to shipment

Customer Pick-Up: Customer-arranged pick-up is available by appointment. Pick-up vehicles must be appropriate for the size and weight of the order. ATS reserves the right to refuse release of merchandise if the vehicle is deemed unsafe or unsuitable. Pick-up delays may result in storage or handling fees.

Delivery Inspection & Freight Claims: Customers are responsible for inspecting shipments at the time of delivery. Visible damage must be noted on the delivery receipt before signing. Concealed damage must be reported promptly and original packaging retained. ATS assumes responsibility for freight damage only on shipments arranged through ATS freight accounts, subject to proper documentation and claim timelines. Freight claims must be submitted in writing using the ATS Freight Claim Evaluation Form.

Unforeseen Delays: ATS MFG is not responsible for delays or inability to perform caused by events beyond our reasonable control, such as material shortages, transportation disruptions, labor interruptions, public health events, or government actions. If such circumstances arise, we will communicate promptly and work in good faith with our customers to adjust

Warranty & Returns

ATS MFG provides limited warranties across our product categories to cover qualifying manufacturer defects in materials and workmanship. Warranty coverage varies by product type and is subject to the terms outlined in the applicable warranty documentation.

• **Furniture:** We warrant qualifying furniture products against manufacturer defects in materials and workmanship for one (1) year from the original date of purchase.

• **Equipment:** MET and FLO products are covered under a one (1) year limited warranty against defects in materials or workmanship under normal use. LIT equipment is covered under a one (1) year limited warranty and serviced by Consumer Priority Service (CPS).

What Is Not Covered: Normal wear and tear; Improper use, installation, or maintenance; Products sold as custom, closeout, as-is, or used; Natural material variations, including wood grain, color variation, or minor warpage

Warranty Claims Process & Timing: Warranty claims must be submitted in writing using the ATS Warranty Evaluation Form. Claims must be reported within the timeframe specified in the applicable warranty. Upon review, ATS will advise on repair, replacement, or other resolution if the claim is approved.

Returns: Non-warranty returns require prior written authorization. Approved returns may be subject to restocking and handling fees and must be freight prepaid. Custom products are not eligible for return.

If you have questions at any stage—before placing an order, coordinating shipping, or submitting a claim—our Customer Service team is here to support you.

ATSMFG **Front-of-House to Back-of-House. Exceptional Value, Reliable quality.**

For more than 30 years, **ATSMFG** has served the restaurant equipment industry with reliable quality, responsive service, and competitive pricing. What began as American Tables & Seating has grown into a complete restaurant project solutions partner. Sold via restaurant equipment dealers, foodservice providers, designers, and architects nationwide.

Through our family of brands, we design, manufacture, and source commercial furniture, equipment, tabletop, and supplies. Our solutions are designed to scale from single unit to multi-location roll-outs.



American Tables & Seating

Complete seating and furniture solutions, from design to delivery. EZ, QuickShip, Built-to-Order, and Custom programs cover the full range of needs with commercial-grade seating, tables, and accessories engineered for comfort, and long-term performance in high-traffic environments.



Stone Mountain Tabletop

A broad selection of dinnerware, drinkware, flatware, and serving pieces designed to elevate presentation and withstand the pace of daily service, all ideal for operators who need style, consistency, and replenishment.



MET Stainless

Commercial stainless-steel equipment and powder-coated shelving built for demanding kitchens. Competitively priced and ready to ship. MET helps improve organization, workflow, and long-term reliability with practical, job-tested essentials.



FLO Commercial Faucets

Heavy-duty commercial kitchen faucet and pre-rinse solutions built for everyday durability. FLO Faucets support efficient dish and prep operations with dependable performance.



LIT Equipment

Back-of-house equipment including warmers, proofers, and cabinets. LIT is designed to support efficient, high-volume kitchen operations where reliability and consistency matter.



Mama Lucy Restaurant Supplies

Trusted supplies for decades, selected and approved by Mama Lucy. Everyday front-of-house and back-of-house essentials that keep operations running smoothly, shift after shift.



Z-Source Global Procurement & Logistics

Our newest brand under the **ATSMFG** umbrella. Z-Source is built on more than 30 years as the behind-the-scenes backbone of **ATSMFG**.

Today, the expertise and convenience is available to all dealers! Z-Source provides white-glove, cost-effective, mixed-container procurement and logistics. Available from the smallest to the largest need for single and multi-location hospitality needs across the U.S.